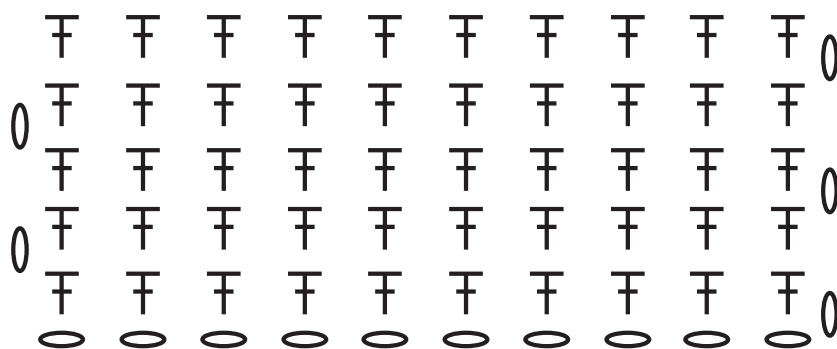


A Stool with a crocheted Seat from XL Manga Yarn

A stool with a soft seat cover crocheted from XL Manga yarn. Use one ball of wool and No. 25 crochet hook.



How to

1: 10 ch

2-6: 1 tr

Turn at the end of each row with a ch



Step 1

Paint the seat of the stool.

Step 2

Attach the crocheted piece to the seat with Fantasia yarn.

Abbreviations and symbols explanation:

0 ch = chain stitch

F tr = treble crochet

This pattern use the UK English crochet terms

