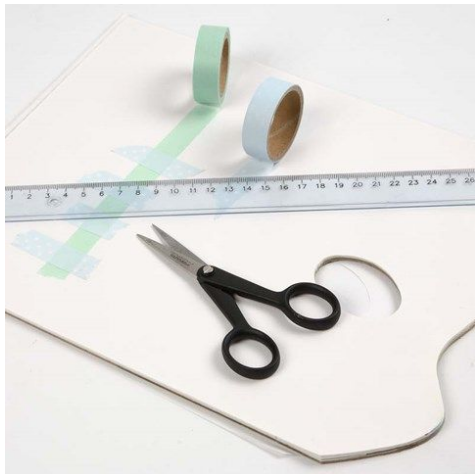




Lanterns decorated with Masking Tape

These lanterns are candle holders which are decorated with Masking Tape and varnished with Decoupage Lacquer for Glass and Porcelain.

Inspiration: 13168



1.

Cut small pieces of Masking Tape using your imagination. Attach the Masking Tape to a piece of baking paper placed on top of a cutting mat – this eases the work. NB: Make a third colour Masking Tape by placing two different colours of Masking Tape on top of each other at right angles.



2.

Attach Masking Tape onto the candle holder in a pattern using your imagination. Finally apply a coat of Decoupage Lacquer for Glass and Porcelain to the outside of the candle holder.

