



The Sorcerers Magic Wand for Role Play

STEP BY STEP 023

Inspiration: 1241

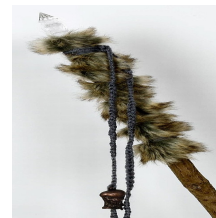


The Sorcerers Magic Wand for Role Play

A painted skull on a wand. Decorated with faux fur, flax twine and hair made from cotton yarn.



1 – Paint the skull with Plus Color Craft Paint and let it dry. □ 2 – Decorate the wand with faux fur by twisting flax twine or cotton twine around it. □ □ 3 – Glue on some cotton yarn for hair using a glue gun and attach it to the wand. □



Variants

If you want to make the role play sorcerer a little less scary, you could use a prism in the top of the wand rather than a skull. □



Skeleton, H: 10 cm,
1 pc
592572



Skeleton, 13 cm, 1
pc
592571

Mercerized Cotton
Yarn, 6s/4, L: 165
m, Black, 50 G, 1
Ball
421200

Plus Color Craft
Paint, White, 60 ml,
1 Bottle
39677

Gold Line Brushes,
Flat, 2+8+12, W:
3+9+12 mm, 3 pc, 1
Pack
100267